

# RIGHT TO KNOW COMPLIANCE CENTER and ACCESSORIES

- For Compliance with OSHA's Hazard Communication Standard • Organize SDS Sheets in One Place •

## RIGHT TO KNOW COMPLIANCE CENTER



Economical and popular.

**This compliance center contains**

- Red polystyrene board:
  - Holes for wall mounting
  - Bright safety colors
  - Storage rack for binder
- Yellow SDS binder:
  - 2" wide with 1-1/2" rings
  - Cover and spine marked SDS
- Chain - 3 feet long

**Part No. RTK200**

20" high x 14" wide x 4-1/2" deep

## RIGHT TO KNOW RACK and BINDER



**This compliance center contains**

- Same rack, binder and chain as RTK200 - without the red backboard:
  - Holes in rack for wall mounting
  - Rack holds binders up to 3-1/2" wide

**Part No. RTK600**

12" high x 14" wide x 4-1/2" deep

# STORAGE BINS

## STORAGE BINS

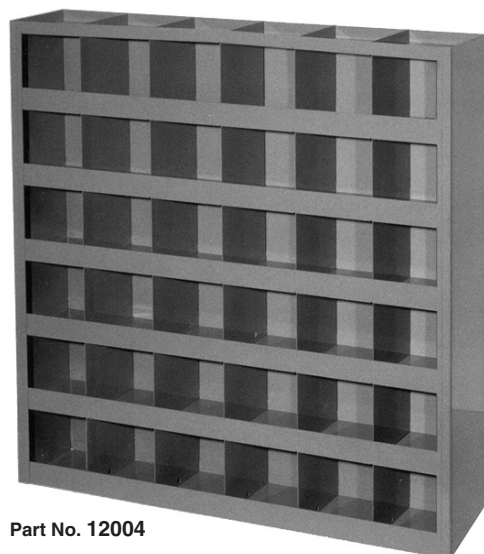
Heavy duty units designed for storing a wide variety of small parts.

- Storage bins are made from prime, cold rolled steel – Interlock and welded construction.
- Rust and acid resistant baked enamel finishes.
- One inch lip provides a convenient location for labels and keeps parts securely in place.

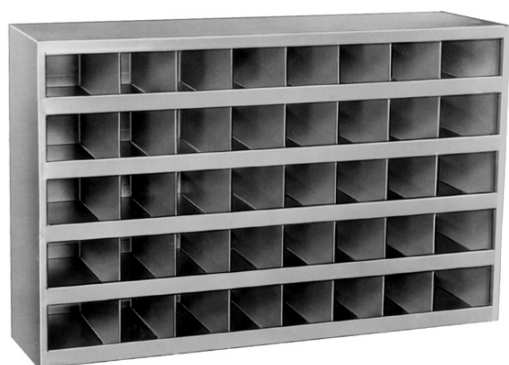
PART NUMBER	SPECIFICATIONS						
	WIDTH	HEIGHT	DEPTH	NUMBER of BINS	BIN DEPTH	BIN HEIGHT	BIN WIDTH
12004*	23-5/8	23-5/8	4-3/4	36	3-3/4	3-3/4	3-7/8
12021†	35	21	12	40	12	4	4
12058	35	9-1/2	12	16	12	4-1/2	4
12068	35	17-1/2	12	32	12	4	4
12154	34	24	12	12	12	6-5/8	8
12155	34	20	12	18	12	6-3/8	5-3/8
12156	34	24	12	24	12	5-1/2	5-3/8
12157	35	21	12	8	12	8	8

\* Vertical dividers are removable, allowing creation of double width bins.

† Doors available below.



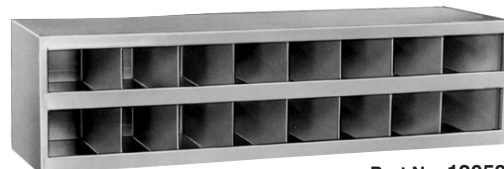
Part No. 12004



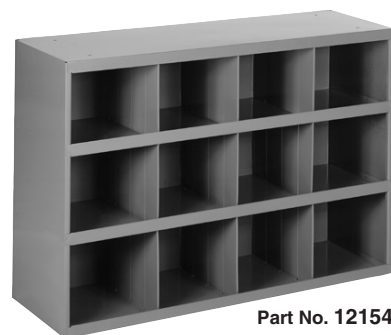
Part No. 12021†

– 72 BIN CABINET –  
ORDER  
12021 and 12068

– 80 BIN CABINET –  
ORDER TWO 12021  
STORAGE BINS.



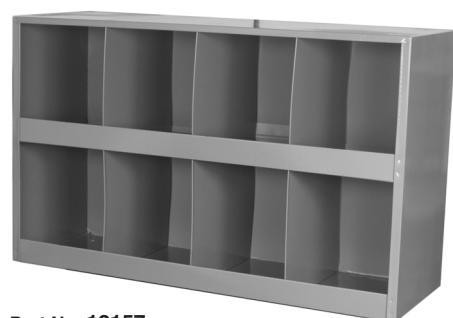
Part No. 12058



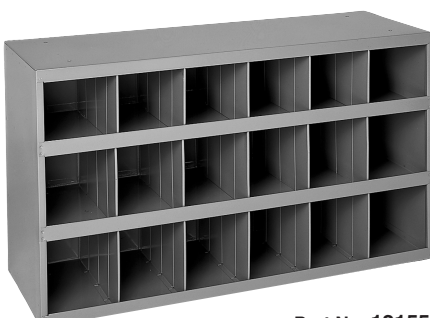
Part No. 12154



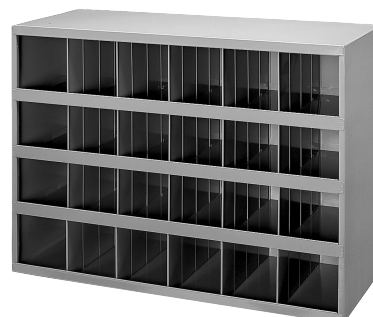
Part No. 12068



Part No. 12157



Part No. 12155



Part No. 12156

# STORAGE TRAYS

## SERVICE TRAYS

Designed for storing and transporting a wide variety of small parts.

- Service trays are made from prime, cold rolled steel.
- Rust and acid resistant baked enamel finishes.
- Service trays have scoop bottom compartments for easy removal of small parts.
- Metal clasp holds lid down to provide transportability.

PART NUMBER	SPECIFICATIONS INCHES			NUMBER of COMPARTMENTS
	WIDTH	HEIGHT	DEPTH	
12116	18	3	12	6
12061	18	3	12	12
12050	18	3	12	16
12071	18	3	12	20
12056*	18	3	12	21
12017	18	3	12	24
12062	18	3	12	32
12166	18	3	12	6

\* 20 equal size compartments, with one large compartment for tools.



Part No. 12017



Part No. 12071



Part No. 12166



Part No. 12116



Part No. 12056



Part No. 12050

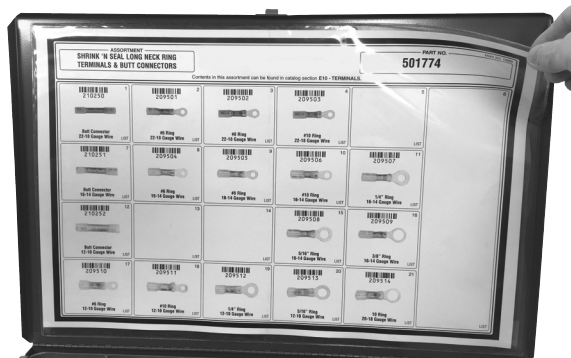


Part No. 12061



Part No. 12062

## CLEAR PLASTIC POUCH FOR SERVICE TRAYS

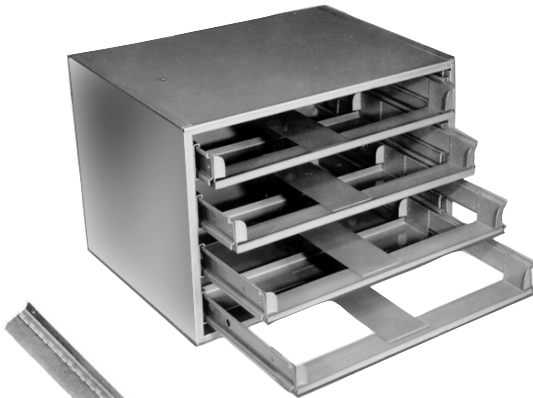


- Keeps lidcharts clean & protected.
- No more dirty or greasy smudges.
- Easily wipes clean.
- Peel & stick backing.
- Holds large sizes up to 17-5/8" x 11-9/16" lid charts.
- Use also for inventory, labels, planograms, job jackets, instruction sheets and more.

Part No. 12183

# STORAGE TRAY ACCESSORIES

## 4 DRAWER SLIDE RACKS



- Slide racks are made from prime, cold rolled steel.
- Rust and acid resistant baked enamel finishes.
- Each tray can hold 100lbs. in the open position without tilting.
- Fits all service trays on the facing page.
- Part No. 12007 features "Triple Track" telescoping tracks for extra extension. Takes up less room but provides full opening. (Spacer saver)
- Part No. 12112 features heavy duty construction with metal riveted roller wheels built to handle the heaviest loads.
- Part No. 12131 to be used with 4 drawer racks listed below.
- Keeps drawers secure in service trucks.



### LOCKING HINGES

For 4 drawer racks.  
Locks drawers in place.

Part No. 12131

PART NUMBER	SPECIFICATIONS			NUMBER of DRAWERS
	WIDTH	HEIGHT	DEPTH	
12134	20-1/4	8-1/8	15-3/4	2
12007	20-5/16	15	12-1/2	4
12019	20-1/4	14-3/4	15-3/4	4

## 6 DRAWER SECURITY SLIDE RACK



- Slide racks are made from prime, cold rolled steel.
- Rust and acid resistant baked enamel finishes.
- Each tray can hold 100lbs. in the open position without tilting.
- Fits all service trays on the facing page.
- Not recommended for wall mounting.
- Door includes an exclusive keyed sliding lock system.
- Telescoping tracks.
- 24" H x 20-3/4" W x 14" D.
- Drawers not included.

Part No. 12135

## SLIDE RACK STANDS



- Acid and rust resistant baked enamel finish.
- For convenient use of lower drawers.
- 1/2" lip at corners so cabinet will not slide off.
- Extra strong allows cabinet stacking.

PART NUMBER	SPECIFICATIONS			USE with SLIDE RACK NO.
	WIDTH	HEIGHT	DEPTH	
12152	20-5/16	5-3/4	12-1/2	12007
12153	20-1/4	5-3/4	15-3/4	12019
12060	20-1/4	15	15-3/4	12019